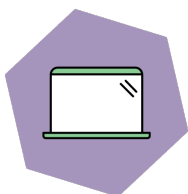




# CERTIFICATE

## TCO Certified, generation 9 for notebooks



**Brand name:** Acer

**Sales name:** TravelMate P2

**Certification date:** 2022-07-22

**Expiry date:** 2024-07-22

### Toward sustainable IT products

TCO Certified is the world-leading sustainability certification for IT products. It is an easy-to-use tool that helps you get environmental and social sustainability right. Criteria are mandatory, tough, and apply globally. Compliance is always independently verified.

For more information, visit [tcocertified.com](https://tcocertified.com).

**No. N922070143**

**Caroline Lindahl**  
Certification process  
TCO Development

This certificate confirms that a sample of the certified product, as stated herein, has been tested and approved as to its compliance with the criteria document valid at the time of the laboratory test. The certified product may, subject to the use of the unique combination of brand name, type/model name and sales name as stated in this certificate, be marked and sold with the TCO Certified label in accordance with the agreement.

# Appendix to certificate No. N922070143



Brand name: Acer

Sales name(s):

TravelMate P2

1st \* : N/A

2nd \* : N/A

Separate power supply: Yes, Class 1 & Class 2

Operating mode sound level: 4.2 B



## 19%

Recycled plastic



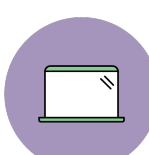
## 2.0 kg

Total weight of product



### Energy consumption:

For energy consumption and yearly emissions, visit [tcocertified.com/product-finder/](https://tcocertified.com/product-finder/)



Aspect ratio: 16:9

Panel size: 15.6 in

Min. resolution width: 1920 px

Min. resolution height: 1080 px



### Battery longevity:

The main battery in this product is tested to withstand at least: **1000** full discharges until it reaches 80% of the initial capacity



### Durability

Drop test height: 122 cm

High temp operational: 49° C

Low temp operational: -32° C

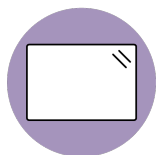
### Model names(s)

N22Q16, TMP215-54, TMP50-54

A blue ink signature of Caroline Lindahl.

Caroline Lindahl  
Certification process  
TCO Development

# Appendix to certificate No. N922070143



## Panels:

AUO B156HAN02.1, LG Display LP156WFH-SPD5, INNOLUX N156HCA-EAB C2, BOE NV156FHM-N48 V8.2, Wistron A156FI, HKC MB156CS01-6, INNOLUX N156HGA-EA3 C1, BOE NT156FHM-N61 V8.0, AUO B156HTN06.1, AUO B156XTN08.1



## Batteries:

LGC AP19B8M, Simplo AP18C7M, LGC AP18C8K, CosMx AP20CBL



## Adapters:

Liteon PA-1450-50, Chicony A18-045N1A, Delta ADP-45FE F

A blue ink signature of Caroline Lindahl.

**Caroline Lindahl**  
Certification process  
TCO Development